



7 Gerard Close

, Chesterfield, S40 3DQ

Guide Price £325,000



7 Gerard Close

, Chesterfield, S40 3DQ

£325,000 - £350,000 (Guide price)

Situated in this highly sought after location, close to local amenities, walks and transport links, whilst enjoying a quiet, head of cul-de-sac location is this well presented and spacious 3 bedroom detached bungalow.

Offering 839 sqft of accommodation, the property features a modern dining kitchen with integrated oven, dishwasher and fridge freezer, a large family lounge with fireplace and expansive window filling the home with natural light, a fully tiled shower room with walk-in shower and 3 generously sized bedrooms with ample storage.

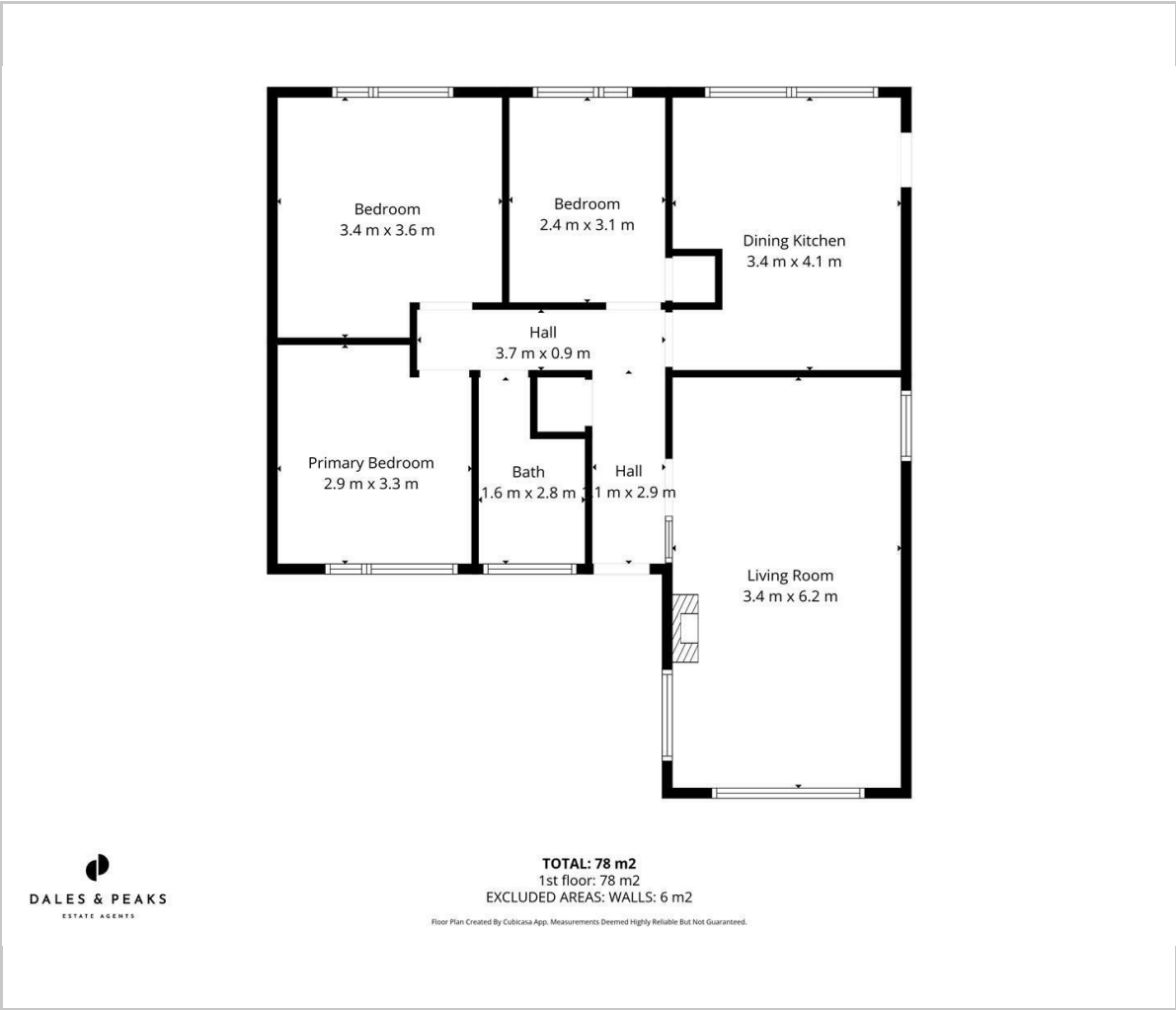
Externally, to the front of the property is a lawned garden and block paved driveway providing off road parking for multiple cars, as well as a detached single garage. To the rear is a landscaped garden with social patio area.

Dales & Peaks ForwardMove
please read





Floor Plan

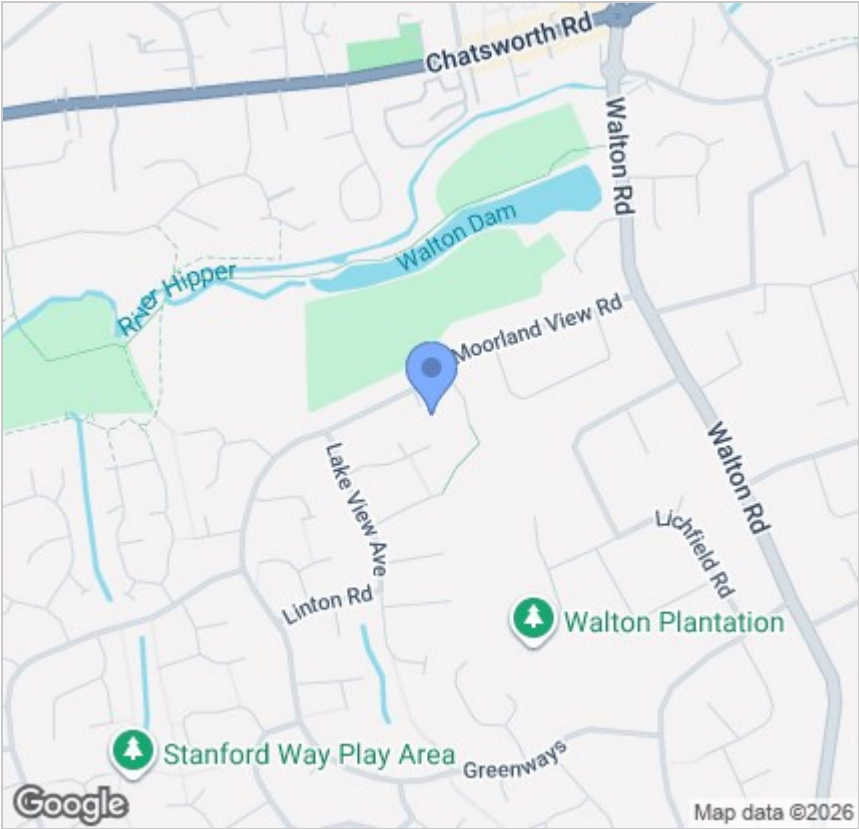


Viewing

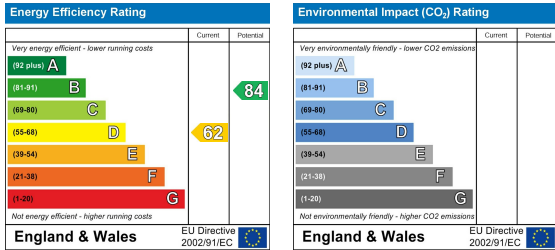
Please contact our Chesterfield Office on 01246 567540 if you wish to arrange a viewing appointment for this property or require further information.

These particulars, whilst believed to be accurate are set out as a general outline only for guidance and do not constitute any part of an offer or contract. Intending purchasers should not rely on them as statements of representation of fact, but must satisfy themselves by inspection or otherwise as to their accuracy. No person in this firms employment has the authority to make or give any representation or warranty in respect of the property.

Area Map



Energy Efficiency Graph



131 Chatsworth Road, Chesterfield, Derbyshire, S40 2AP
T: 01246 567540



E: info@dalesandpeaks.co.uk
www.dalesandpeaks.co.uk